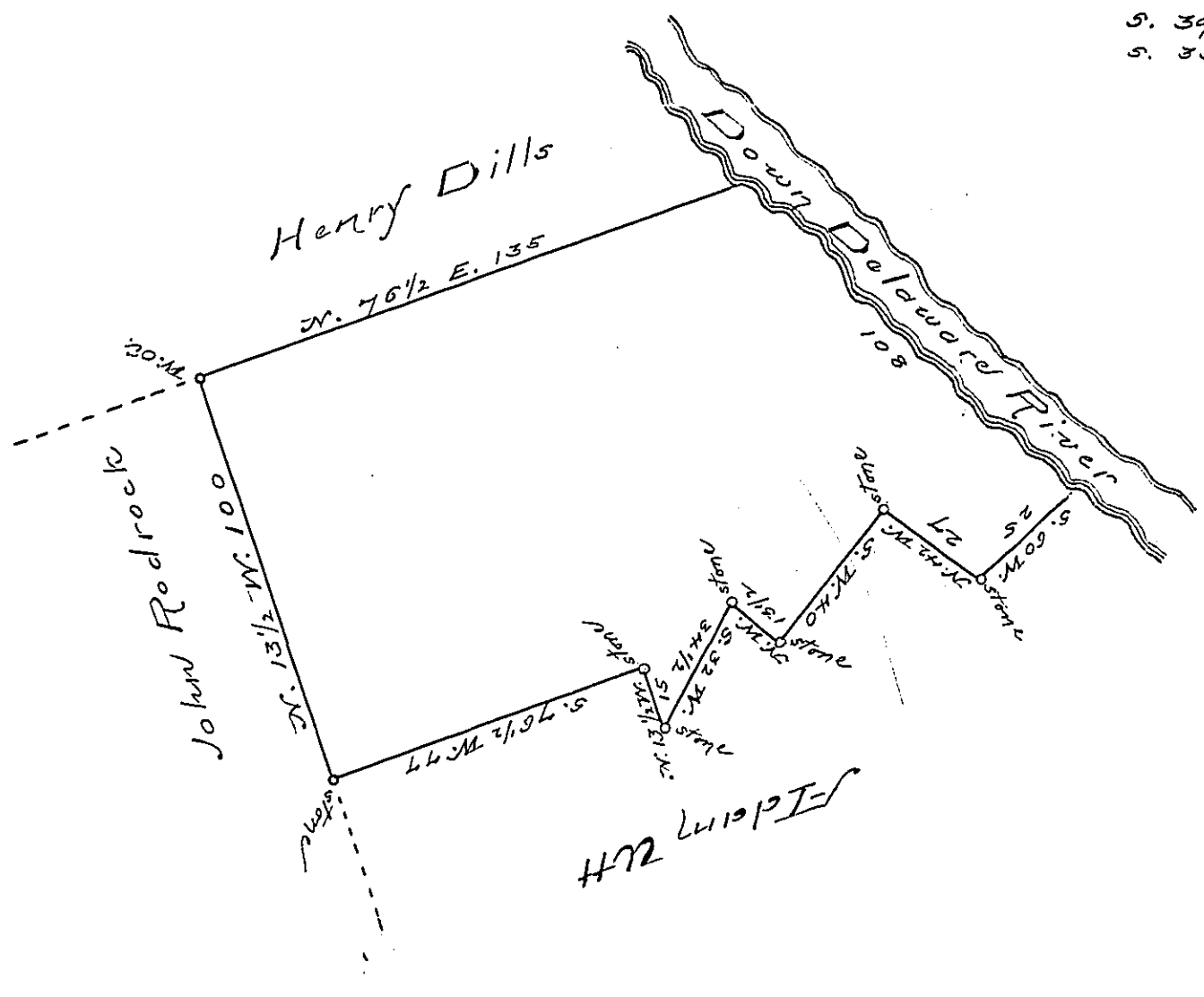


The bearings and distances
down Delaware River
are

S. 39 1/2 E. 70 1/2
S. 35 1/4 E. 37 1/2
108



N. B. The above lands have been
improved at least sixty years.

By Virtue of a Warrant dated the 14th
June 1793. Surveyed the 10th June 1825
to Jacob Ott the above described tract of
land situate in Upper Mount Bethel Town-
ship in the County of Northampton Con-
taining ninety one acres and one hundred
and forty three perches and the allowance
of six P. Cent &c.

To
Gabriel Heister Esq. }
Surveyor General } Saml. Rees D.C.

IN TESTIMONY that the above is a copy of the original remaining on file in the
Department of Internal Affairs of Pennsylvania, made con-
formably to an Act of Assembly approved the 16th day of
February, 1833. I have hereunto set my Hand and caused
the Seal of said Department to be affixed at Harrisburg, this
— third — day of — March — 1896.

James W. Latta
Secretary of Internal Affairs.